

Life Is On

**Schneider**  
Electric

[www.schneider-electric.com](http://www.schneider-electric.com)

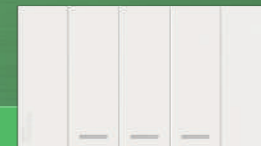
Schneider Electric Industries SAS  
35, rue Joseph Monier - CS 30323  
F92506 Rueil-Malmaison Cedex

© 2020 Schneider Electric. All Rights Reserved. Life Is On Schneider Electric is a trademark and the property of Schneider Electric SE, its subsidiaries and affiliated companies.

**Green Premium™** Sustainable performance, by design



**AvatarOn A** – installed in a flash,  
loved for a lifetime.



[se.com/AvatarOnA](http://se.com/AvatarOnA)

Life Is On

**Schneider**  
Electric

## Timeless Design

The modern, timeless design of AvatarOn A effortlessly highlights the interior of any room. With a full-flat surface, this frameless range offers a high-end aesthetic that's accessible to everyone.

## Reliability in Every Detail

AvatarOn A switches are not simply built to last; they're built to last well. All switches uphold a high safety standard throughout the entirety of their lifespan. With our Sound of Safety-principle, each switch offers a reassuring click that serves a signal of proper operation. This click is a result of widening the distance between the contact points within the switch, reducing your risk of damage by sudden high voltage. This is especially helpful in humid or dusty environments, where the risk of contact failures and damage can be much higher.



## Trusted Safety

The AvatarOn A range is made for reliable every-day use. Safety is our first priority and all switches and sockets comply to IEC Standards. Modules and frames are marked for guidance, and cables remain firmly fastened in the push-in terminal even during prolonged use. High-quality raw materials and a streamlined manufacturing process ensure the range remains environmentally-friendly (ROHS Directive; Reach; Green Premium) and compliant with the highest test and approval standards. Green Premium stands for our commitment to providing innovative products, solutions and services that help our customers balance their carbon footprint.



Resource performance



Circularity performance



Well-being performance

For more information, visit [se.com/green-premium](https://se.com/green-premium).





## Mix It or Match It

AvatarOn A is easy to mix and match. Designed using modular mechanisms, AvatarOn A allows you to combine switches and sockets for your every need. Enjoy the flexibility to pair any interior and find the combination that's perfect for you. And this flexibility is not merely limited to the functionality. Reflect your personal style with monochrome color variations: white, grey and black.

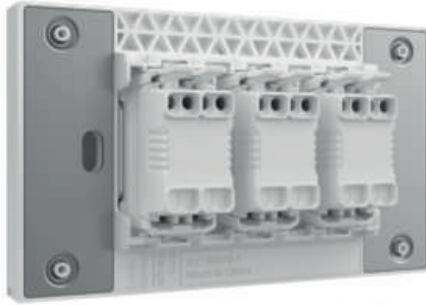
Module combination - S, 2S, M and E sizes





## Installed in a Flash

AvatarOn A is designed to be mounted or removed with ease. The clever combination of a push-in terminal and a quick release key result in switches and sockets that can be connected or released in a flash, and without the need for any extra tools. Allowing everyone to save precious time and effort.



With release key, electrician doesn't need to use tools to release the wire, which is more efficient and handy.



## Free from Tangles

The handy push-in terminal requires no additional tools to install. Wires are easy to connect and extremely time saving, especially when installing multiple switches and sockets. An improved internal push-in terminal structure allows solid and stranded wires, with a thickness of 1.5mm - 4.0mm, to be pushed in and pulled out easily. While an enlarged opening and a separation plate at the bottom of each terminal keeps the wires away from each other, making tangling is non-issue.



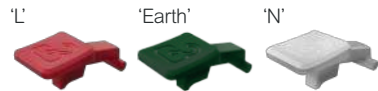
## Press and Pull

An innovative release key allows electricians to disconnect the module from the wire with two simple steps: press and pull. The curved design of this release key encourages use and gives your fingers plenty to grab onto.

Fast Release Key

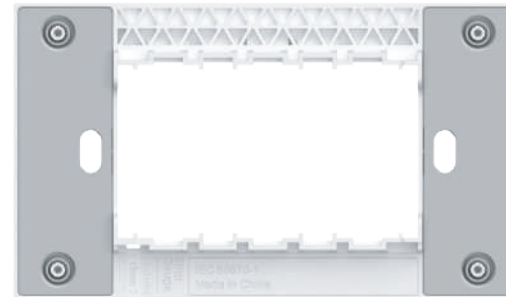
Step 1: Press

Step 2: Pull

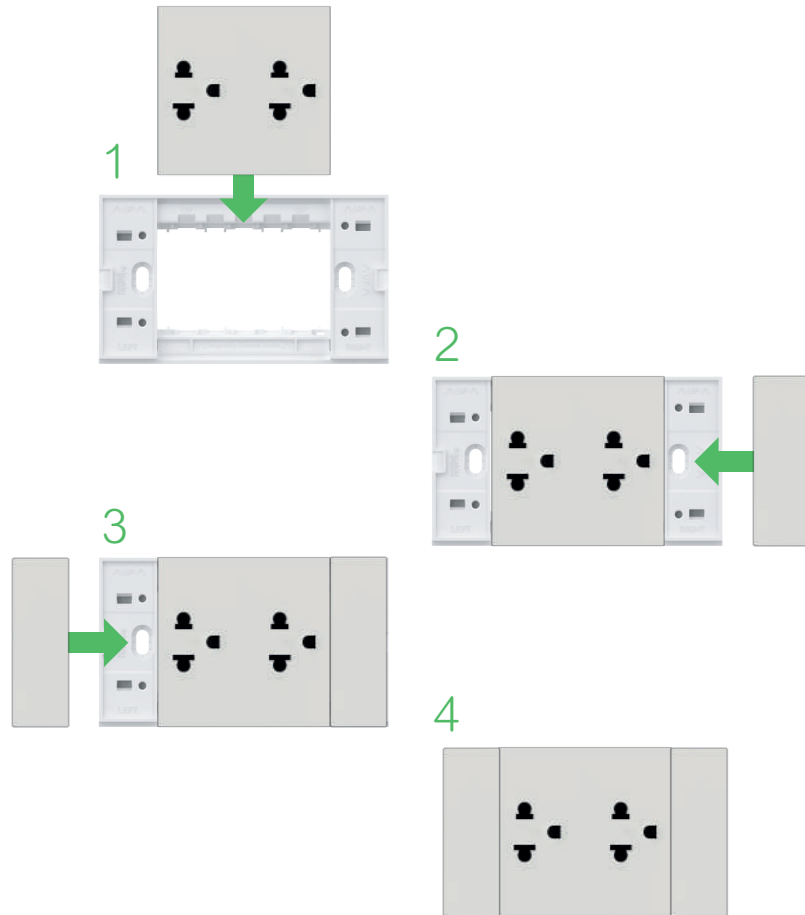


Release key with different colors to indicate L, N and Earth connection. Easier for electrician to recognize, fast connection.

## Clearly Marked and Indicated

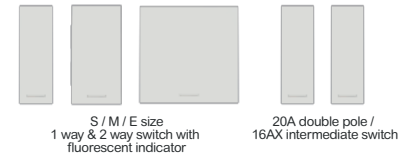


# Installation

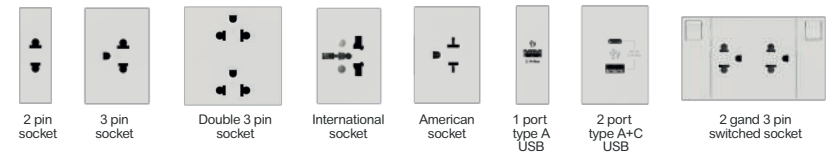


# Product Selector

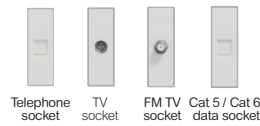
## Switch module



## Socket module



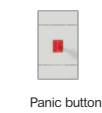
## VDI module



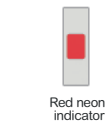
## Dimmer



## Panic Button



## Red neon Indicator



## Weatherproof box



## Grid Plate & Cover



## Color

